

DISCLOSURE PLAN FOR PROPOSED LOT 260

This Disclosure Plan was prepared in accordance with the Land Sales Act 1984 to enable the sale of proposed lots. This plan should not be used for design purposes as the details shown on this plan may vary from final site conditions. Waterlea Nominees Co Pty Ltd recommends using As Constructed information for design purposes.

As-Constructed details shown hereon were supplied by LandPartners on 17th January 2019.

As-Constructed surface contours based on AHD-D datum at an interval on 0.25m, shown as: — 63.25 —

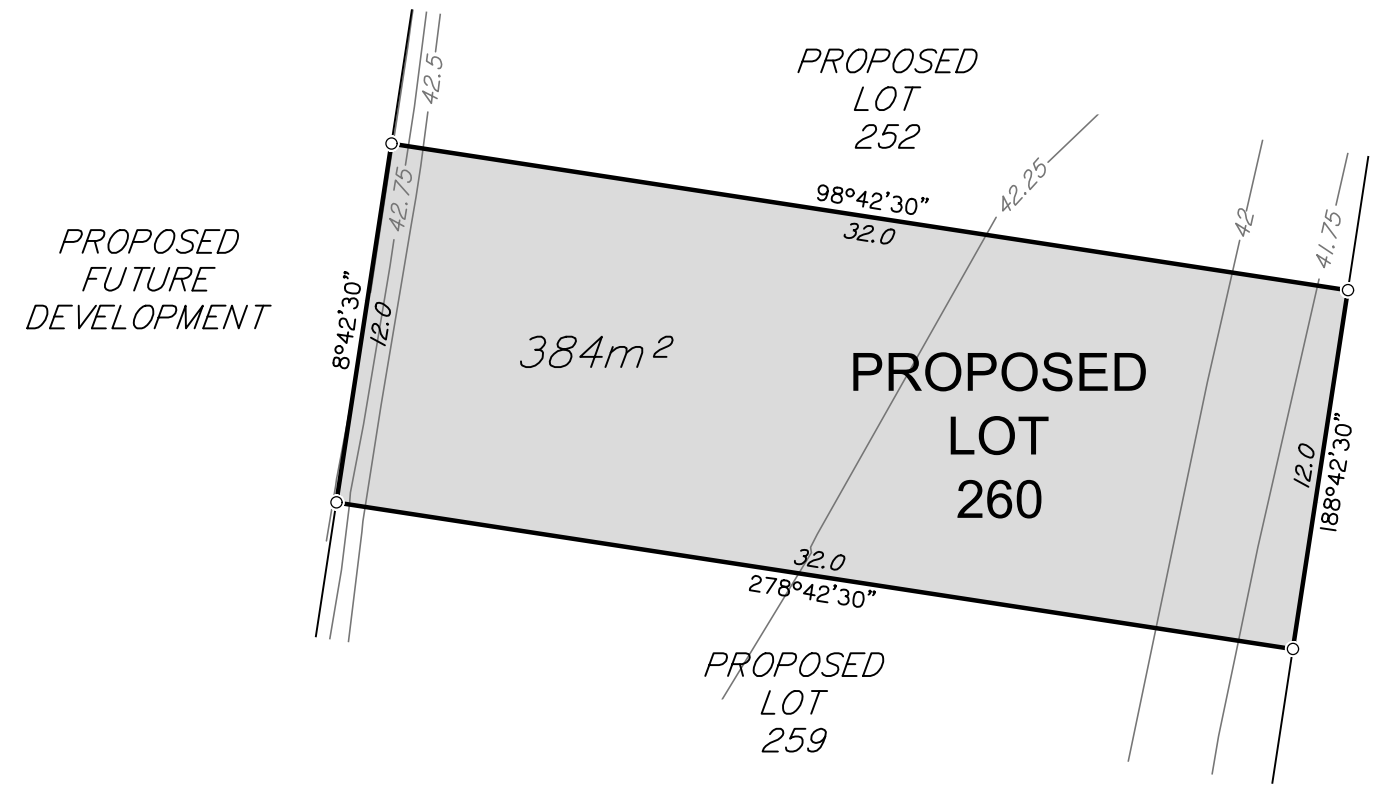
Where applicable, Easements are shown as: []

Where applicable filled areas are shown as: [█]

Where applicable cut areas are shown as: [+ + +]

Maximum Fill Depth: 2.19m

Fill Compaction Rate: 95% Standard Dry Density, carried out in accordance with Australian Standard AS 3798 – 2007 and Ipswich City Council Planning Scheme Policy 3 – General Works, Part 4 – Earthworks.



Project: WATERLEA STAGE 3B	Client: WATERLEA NOMINEES CO PTY LTD
--------------------------------------	------------------------------------------------



LANDPARTNERS
built environment consultants

Western Corridor Office
Level 6, Springfield Tower
145 Sinnathamby Boulevard
Springfield Central QLD 4300
PO Box 4647
Springfield QLD 4300

t (07) 3470 8100
f (07) 3470 8101
e info@landpartners.com.au
w www.landpartners.com.au



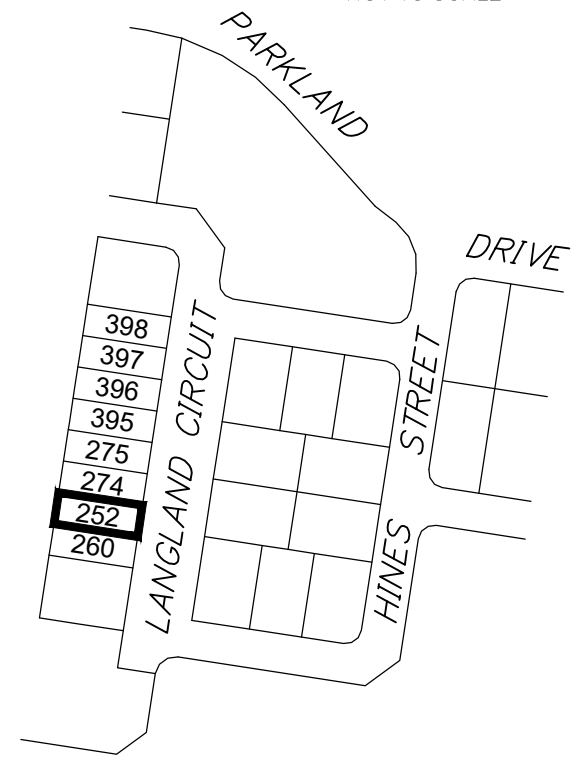
SCALE 1:250

DRAWN	AW	DATUM	AHD D
DATE	31/07/2019	LEVEL ORIGIN	PSM133152 RL 37.876
CHECKED	PJB	COMPUTER FILE	WC007157-03B-56-1
DATE	31/07/2019	SCALE (@ A3)	1:250
APPROVED	PJB	PLAN NUMBER	WC007157-03B-57-1
DATE	31/07/2019		



LOCALITY DIAGRAM

NOT TO SCALE



DISCLOSURE PLAN FOR PROPOSED LOT 252

This Disclosure Plan was prepared in accordance with the Land Sales Act 1984 to enable the sale of proposed lots. This plan should not be used for design purposes as the details shown on this plan may vary from final site conditions. Waterlea Nominees Co Pty Ltd recommends using As Constructed information for design purposes.

As-Constructed details shown hereon were supplied by LandPartners on 17th January 2019.

As-Constructed surface contours based on AHD-D datum at an interval on 0.25m, shown as: 63.25

Where applicable, Easements are shown as:

Where applicable filled areas are shown as:

Where applicable cut areas are shown as:

Maximum Fill Depth: 2.18m

Fill Compaction Rate: 95% Standard Dry Density, carried out in accordance with Australian Standard AS 3798 – 2007 and Ipswich City Council Planning Scheme Policy 3 – General Works, Part 4 – Earthworks.

Project:
**WATERLEA
STAGE 3B**

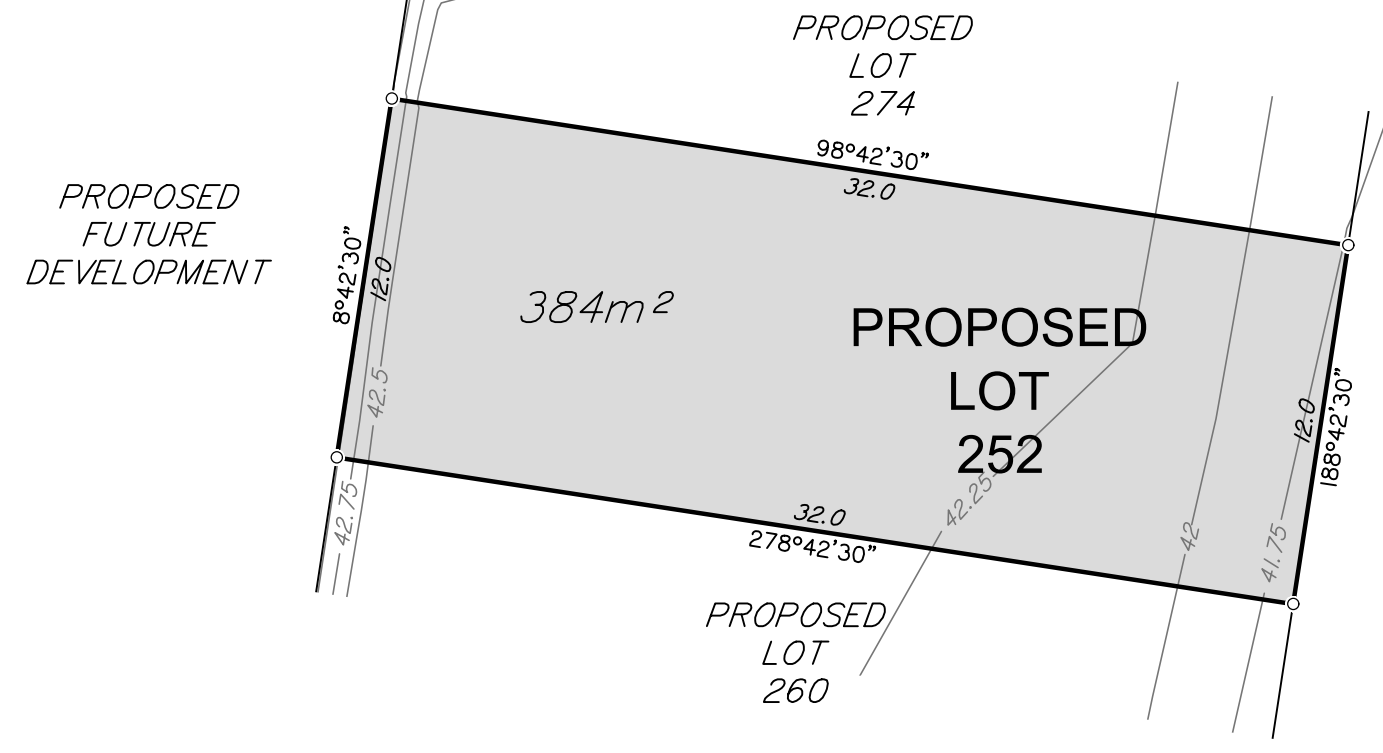
Client:
**WATERLEA
NOMINEES CO
PTY LTD**



Western Corridor Office
Level 6, Springfield Tower
145 Sinnathamby Boulevard
Springfield Central QLD 4300
PO Box 4647
Springfield QLD 4300
t (07) 3470 8100
f (07) 3470 8101
e info@landpartners.com.au
w www.landpartners.com.au

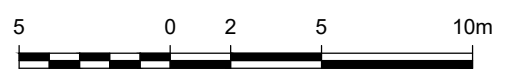


DRAWN	AW	DATUM	AHD D
DATE	31/07/2019	LEVEL ORIGIN	PSM133152 RL 37.876
CHECKED	PJB	COMPUTER FILE	WC007157-03B-56-1
DATE	31/07/2019	SCALE (@ A3)	1:250
APPROVED	PJB	PLAN NUMBER	WC007157-03B-58-1
DATE	31/07/2019		

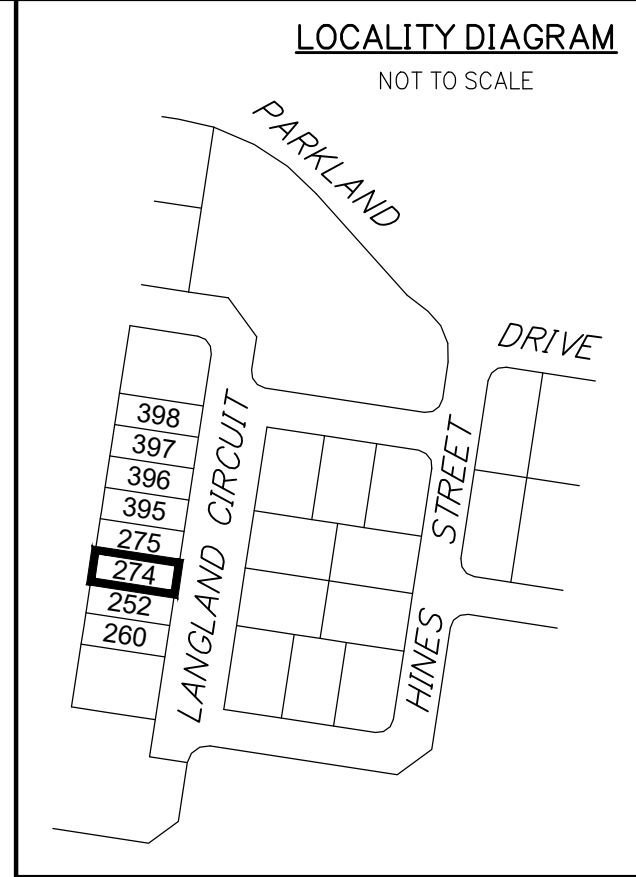


PROPOSED
FUTURE
DEVELOPMENT

LANGLAND CIRCUIT
(PROPOSED NEW ROAD)



SCALE 1:250



DISCLOSURE PLAN FOR PROPOSED LOT 274

This Disclosure Plan was prepared in accordance with the Land Sales Act 1984 to enable the sale of proposed lots. This plan should not be used for design purposes as the details shown on this plan may vary from final site conditions. Waterlea Nominees Co Pty Ltd recommends using As Constructed information for design purposes.

As-Constructed details shown hereon were supplied by LandPartners on 17th January 2019.

As-Constructed surface contours based on AHD-D datum at an interval on 0.25m, shown as: — 63.25 —

Where applicable, Easements are shown as: []

Where applicable filled areas are shown as: [█]

Where applicable cut areas are shown as: [+ + +]

Maximum Fill Depth: 2.12m

Fill Compaction Rate: 95% Standard Dry Density, carried out in accordance with Australian Standard AS 3798 – 2007 and Ipswich City Council Planning Scheme Policy 3 – General Works, Part 4 – Earthworks.

Project: WATERLEA STAGE 3B	Client: WATERLEA NOMINEES CO PTY LTD
--------------------------------------	------------------------------------------------

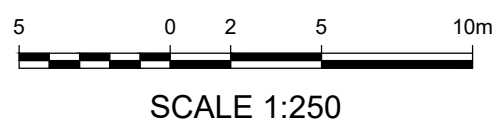
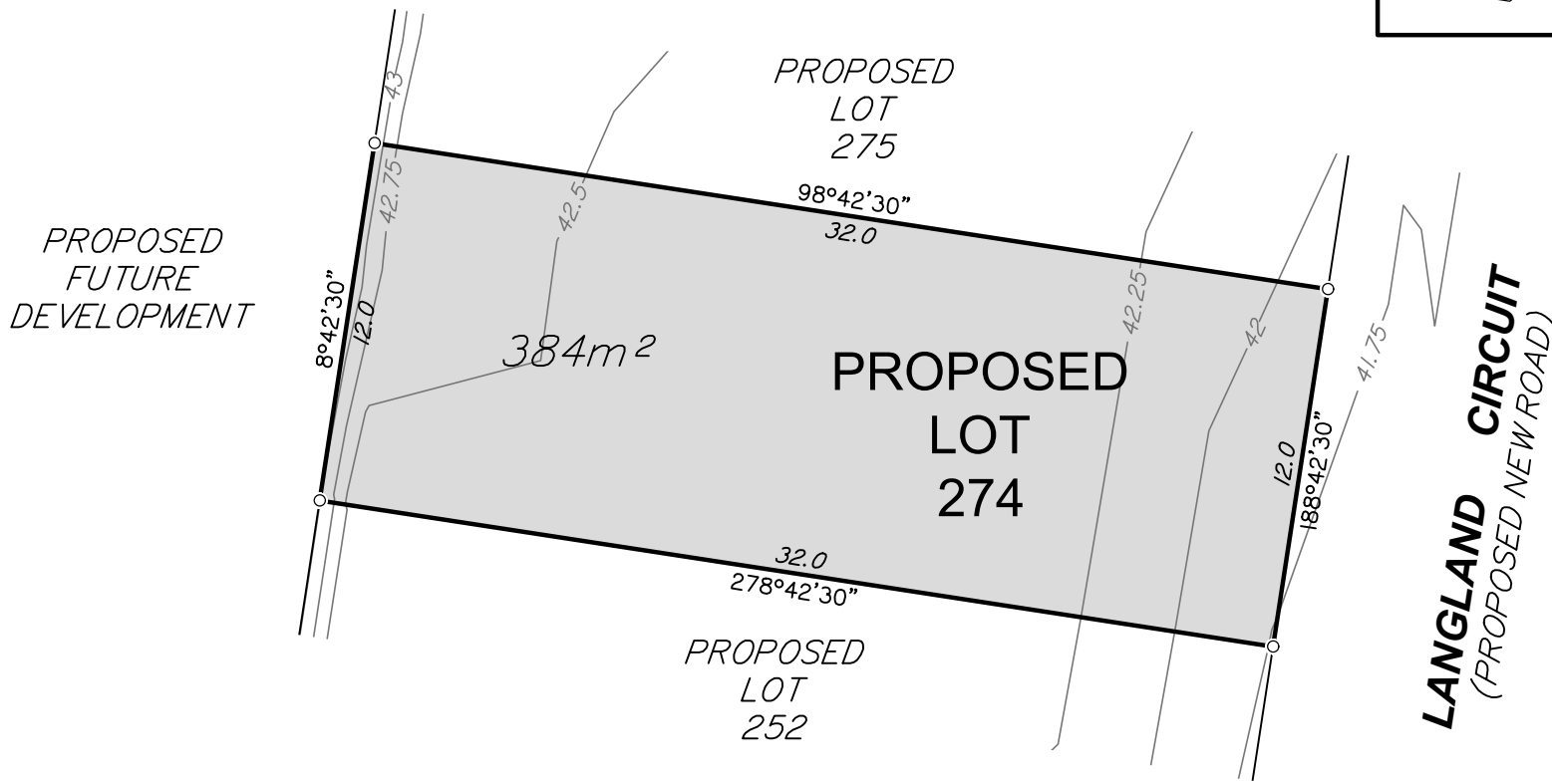


LANDPARTNERS
built environment consultants

Western Corridor Office
Level 6, Springfield Tower
145 Sinnathamby Boulevard
Springfield Central QLD 4300
PO Box 4647
Springfield QLD 4300

t (07) 3470 8100
f (07) 3470 8101
e info@landpartners.com.au
w www.landpartners.com.au

DRAWN	AW	DATUM	AHD D
DATE	31/07/2019	LEVEL ORIGIN	PSM133152 RL 37.876
CHECKED	PJB	COMPUTER FILE	WC007157-03B-56-1
DATE	31/07/2019	SCALE (@ A3)	1:250
APPROVED	PJB	PLAN NUMBER	WC007157-03B-59-1
DATE	31/07/2019		

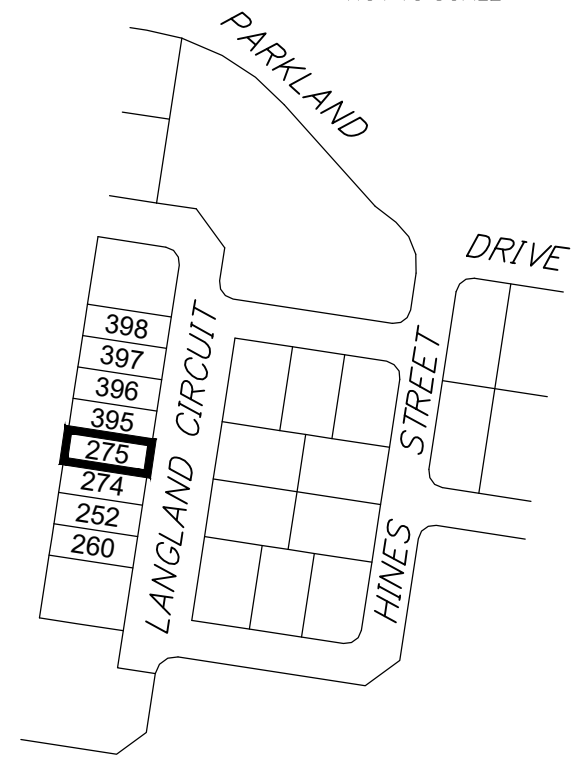


PJB



LOCALITY DIAGRAM

NOT TO SCALE



DISCLOSURE PLAN FOR PROPOSED LOT 275

This Disclosure Plan was prepared in accordance with the Land Sales Act 1984 to enable the sale of proposed lots. This plan should not be used for design purposes as the details shown on this plan may vary from final site conditions. Waterlea Nominees Co Pty Ltd recommends using As Constructed information for design purposes.

As-Constructed details shown hereon were supplied by LandPartners on 17th January 2019.

As-Constructed surface contours based on AHD-D datum at an interval on 0.25m, shown as: 63.25

Where applicable, Easements are shown as:

Where applicable filled areas are shown as:

Where applicable cut areas are shown as:

Maximum Fill Depth: 2.12m

Fill Compaction Rate: 95% Standard Dry Density, carried out in accordance with Australian Standard AS 3798 – 2007 and Ipswich City Council Planning Scheme Policy 3 – General Works, Part 4 – Earthworks.

Project:
**WATERLEA
STAGE 3B**

Client:
**WATERLEA
NOMINEES CO
PTY LTD**

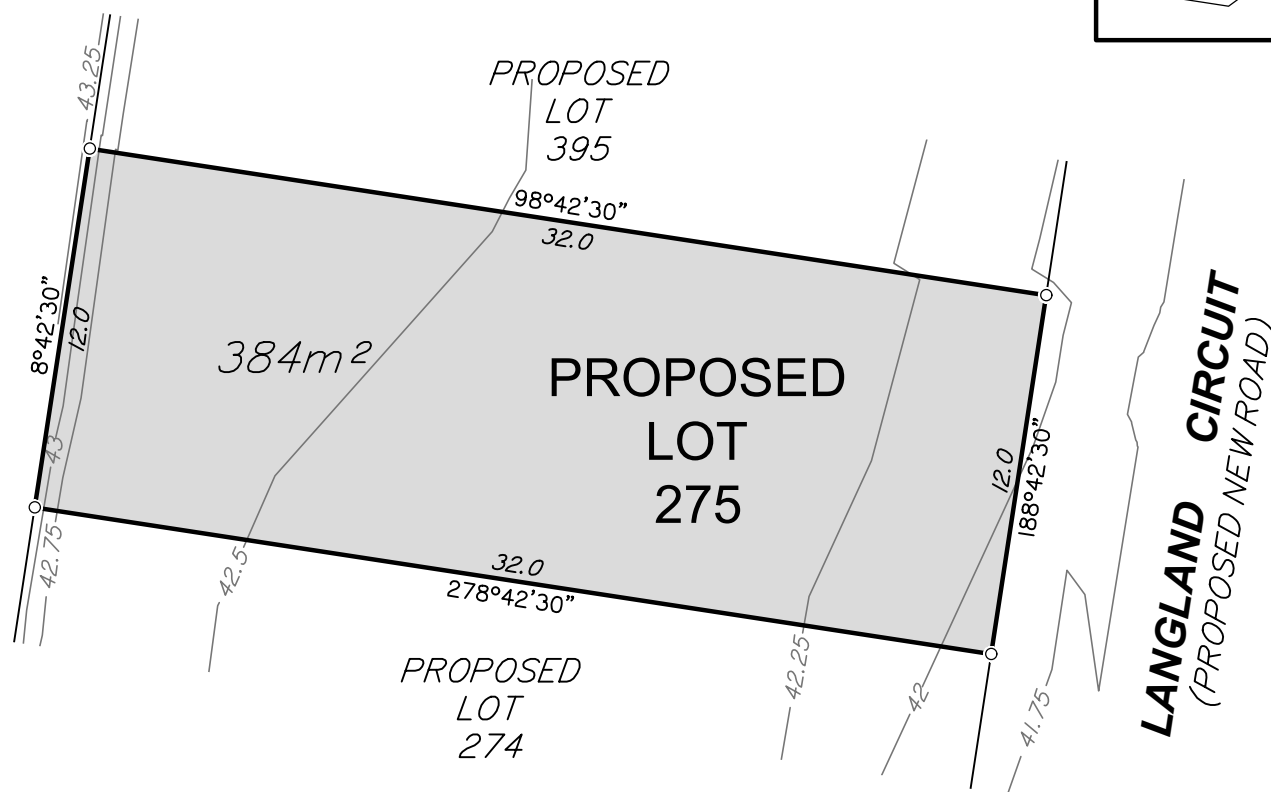


Western Corridor Office
Level 6, Springfield Tower
145 Sinnathamby Boulevard
Springfield Central QLD 4300
PO Box 4647
Springfield QLD 4300
t (07) 3470 8100
f (07) 3470 8101
e info@landpartners.com.au
w www.landpartners.com.au



DRAWN	AW	DATUM	AHD D
DATE	31/07/2019	LEVEL ORIGIN	PSM133152 RL 37.876
CHECKED	PJB	COMPUTER FILE	WC007157-03B-56-1
DATE	31/07/2019	SCALE (@ A3)	1:250
APPROVED	PJB	PLAN NUMBER	WC007157-03B-60-1
DATE	31/07/2019		

PROPOSED
FUTURE
DEVELOPMENT

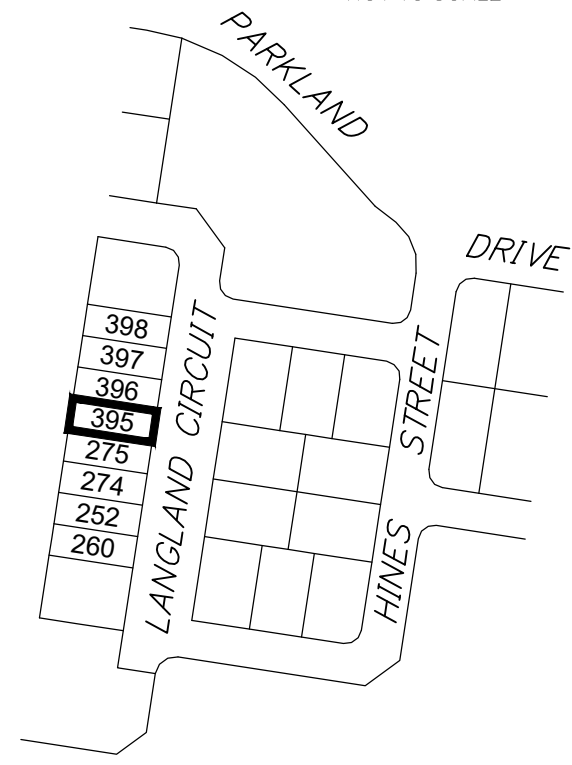


SCALE 1:250



LOCALITY DIAGRAM

NOT TO SCALE



DISCLOSURE PLAN FOR PROPOSED LOT 395

This Disclosure Plan was prepared in accordance with the Land Sales Act 1984 to enable the sale of proposed lots. This plan should not be used for design purposes as the details shown on this plan may vary from final site conditions. Waterlea Nominees Co Pty Ltd recommends using As Constructed information for design purposes.

As-Constructed details shown hereon were supplied by LandPartners on 17th January 2019.

As-Constructed surface contours based on AHD-D datum at an interval on 0.25m, shown as: 63.25

Where applicable, Easements are shown as:

Where applicable filled areas are shown as:

Where applicable cut areas are shown as:

Maximum Fill Depth: 2.00m

Fill Compaction Rate: 95% Standard Dry Density, carried out in accordance with Australian Standard AS 3798 – 2007 and Ipswich City Council Planning Scheme Policy 3 – General Works, Part 4 – Earthworks.

Project:
**WATERLEA
STAGE 3B**

Client:
**WATERLEA
NOMINEES CO
PTY LTD**

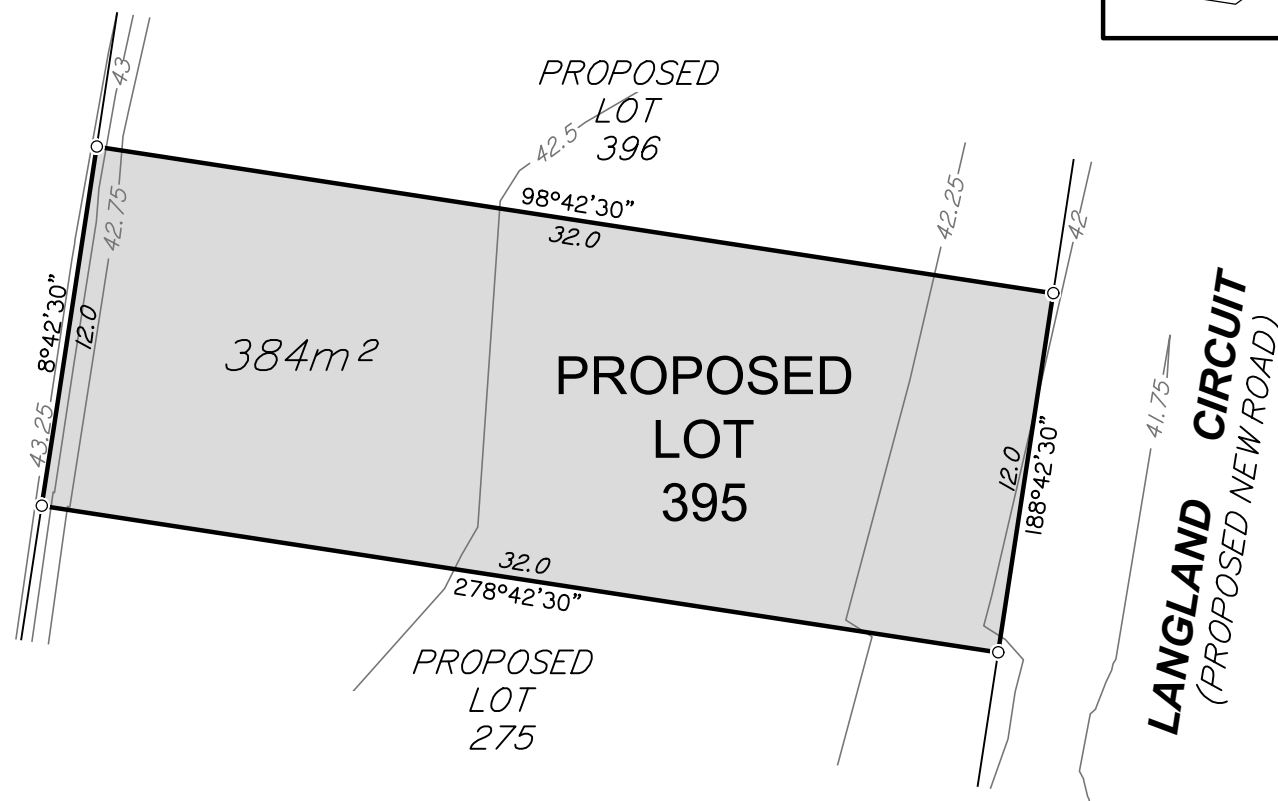


Western Corridor Office
Level 6, Springfield Tower
145 Sinnathamby Boulevard
Springfield Central QLD 4300
PO Box 4647
Springfield QLD 4300
t (07) 3470 8100
f (07) 3470 8101
e info@landpartners.com.au
w www.landpartners.com.au



DRAWN	AW	DATUM	AHD D
DATE	31/07/2019	LEVEL ORIGIN	PSM133152 RL 37.876
CHECKED	PJB	COMPUTER FILE	WC007157-03B-56-1
DATE	31/07/2019	SCALE (@ A3)	1:250
APPROVED	PJB	PLAN NUMBER	WC007157-03B-61-1
DATE	31/07/2019		

PROPOSED
FUTURE
DEVELOPMENT

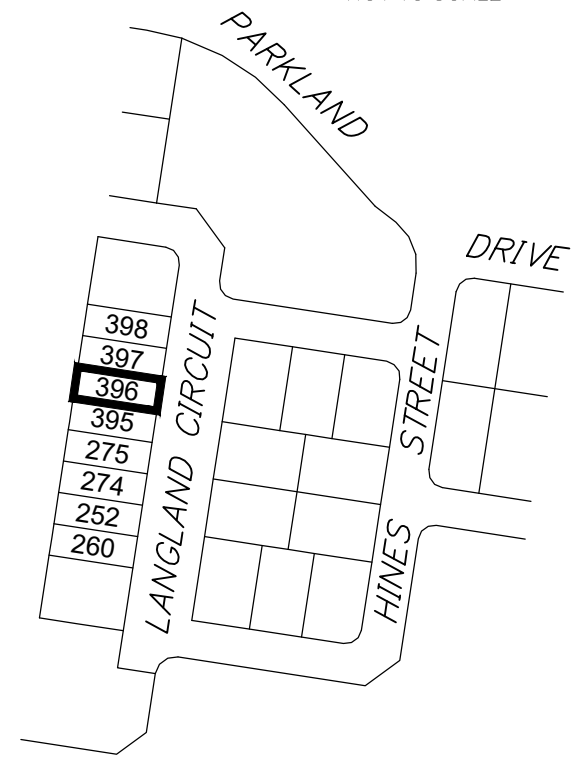


SCALE 1:250



LOCALITY DIAGRAM

NOT TO SCALE



DISCLOSURE PLAN FOR PROPOSED LOT 396

This Disclosure Plan was prepared in accordance with the Land Sales Act 1984 to enable the sale of proposed lots. This plan should not be used for design purposes as the details shown on this plan may vary from final site conditions. Waterlea Nominees Co Pty Ltd recommends using As Constructed information for design purposes.

As-Constructed details shown hereon were supplied by LandPartners on 17th January 2019.

As-Constructed surface contours based on AHD-D datum at an interval on 0.25m, shown as: 63.25

Where applicable, Easements are shown as:

Where applicable filled areas are shown as:

Where applicable cut areas are shown as:

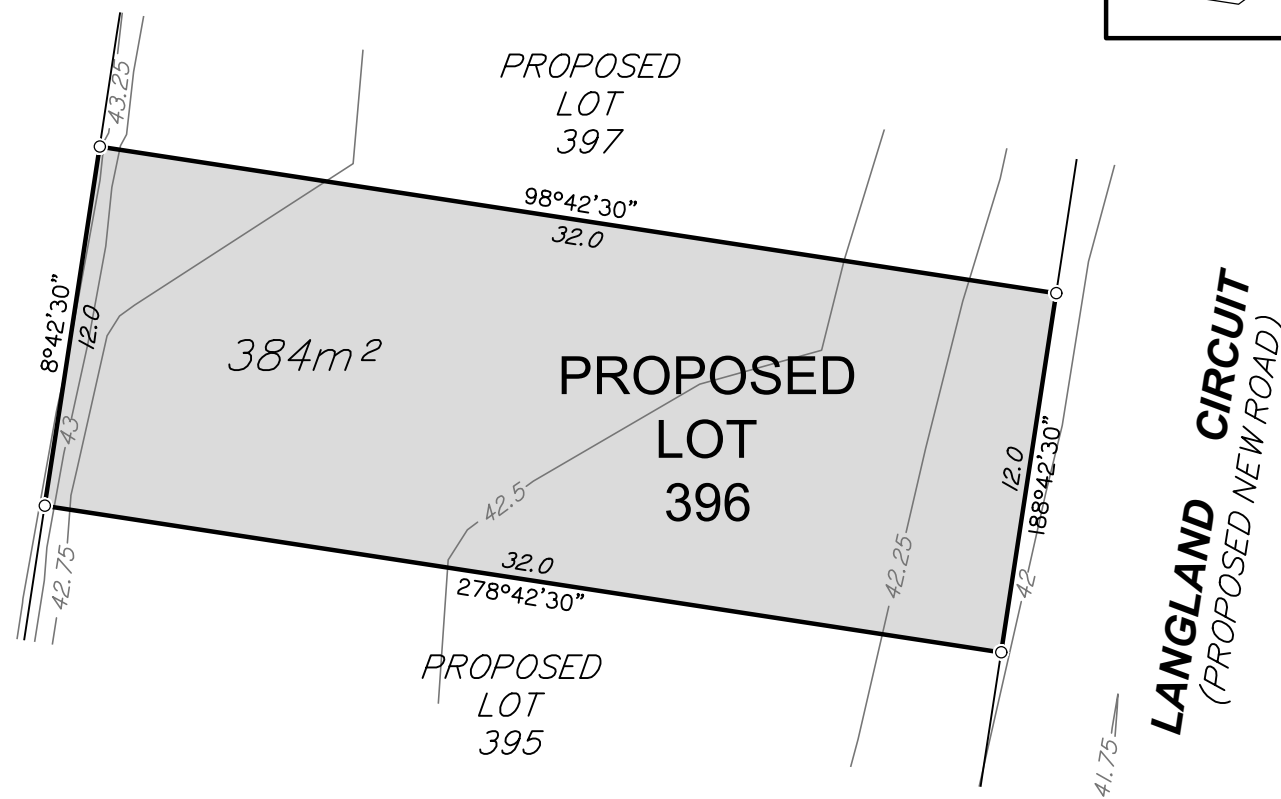
Maximum Fill Depth: 2.13m

Fill Compaction Rate: 95% Standard Dry Density, carried out in accordance with Australian Standard AS 3798 – 2007 and Ipswich City Council Planning Scheme Policy 3 – General Works, Part 4 – Earthworks.

Project:
**WATERLEA
STAGE 3B**

Client:
**WATERLEA
NOMINEES CO
PTY LTD**

PROPOSED
FUTURE
DEVELOPMENT



LANGLAND CIRCUIT
(PROPOSED NEW ROAD)



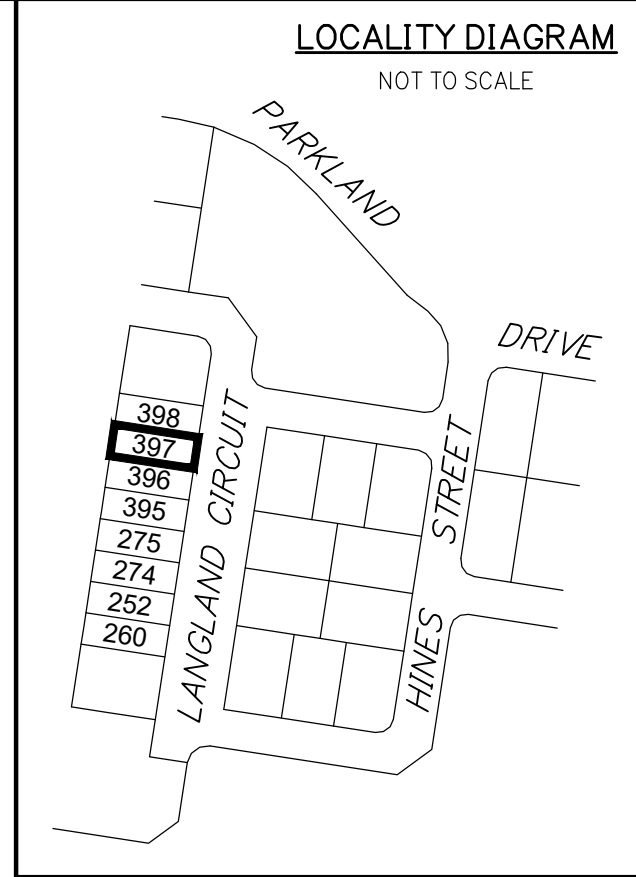
SCALE 1:250



Western Corridor Office
Level 6, Springfield Tower
145 Sinnathamby Boulevard
Springfield Central QLD 4300
PO Box 4647
Springfield QLD 4300
t (07) 3470 8100
f (07) 3470 8101
e info@landpartners.com.au
w www.landpartners.com.au



DRAWN	AW	DATUM	AHD D
DATE	31/07/2019	LEVEL ORIGIN	PSM133152 RL 37.876
CHECKED	PJB	COMPUTER FILE	WC007157-03B-56-1
DATE	31/07/2019	SCALE (@ A3)	1:250
APPROVED	PJB	PLAN NUMBER	WC007157-03B-62-1
DATE	31/07/2019		



DISCLOSURE PLAN FOR PROPOSED LOT 397

This Disclosure Plan was prepared in accordance with the Land Sales Act 1984 to enable the sale of proposed lots. This plan should not be used for design purposes as the details shown on this plan may vary from final site conditions. Waterlea Nominees Co Pty Ltd recommends using As Constructed information for design purposes.

As-Constructed details shown hereon were supplied by LandPartners on 17th January 2019.

As-Constructed surface contours based on AHD-D datum at an interval on 0.25m, shown as: 63.25

Where applicable, Easements are shown as:

Where applicable filled areas are shown as:

Where applicable cut areas are shown as: + + +

Maximum Fill Depth: 2.14m

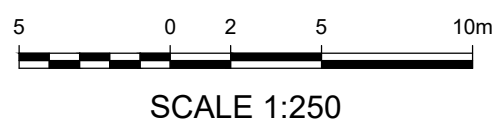
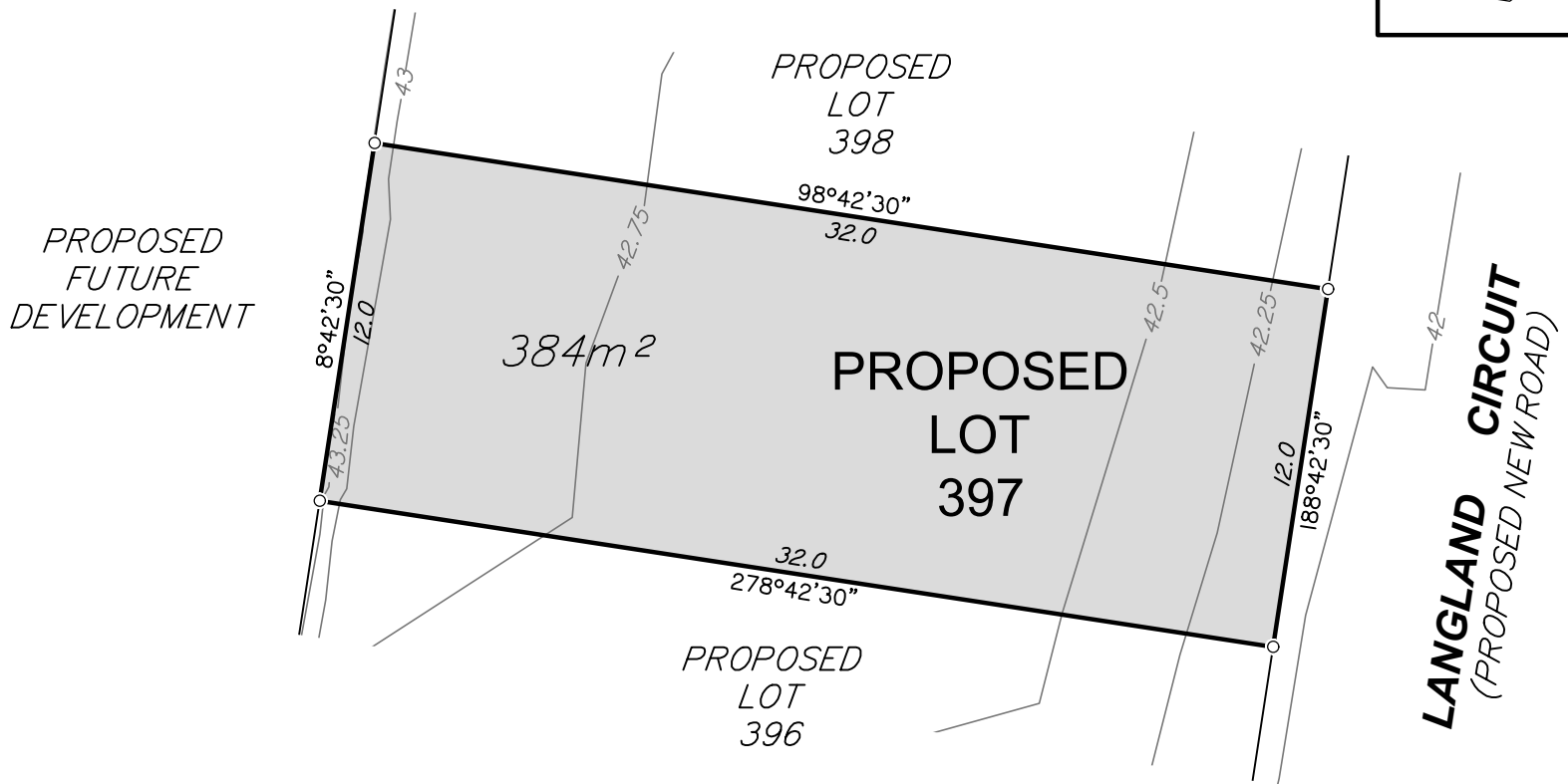
Fill Compaction Rate: 95% Standard Dry Density, carried out in accordance with Australian Standard AS 3798 – 2007 and Ipswich City Council Planning Scheme Policy 3 – General Works, Part 4 – Earthworks.

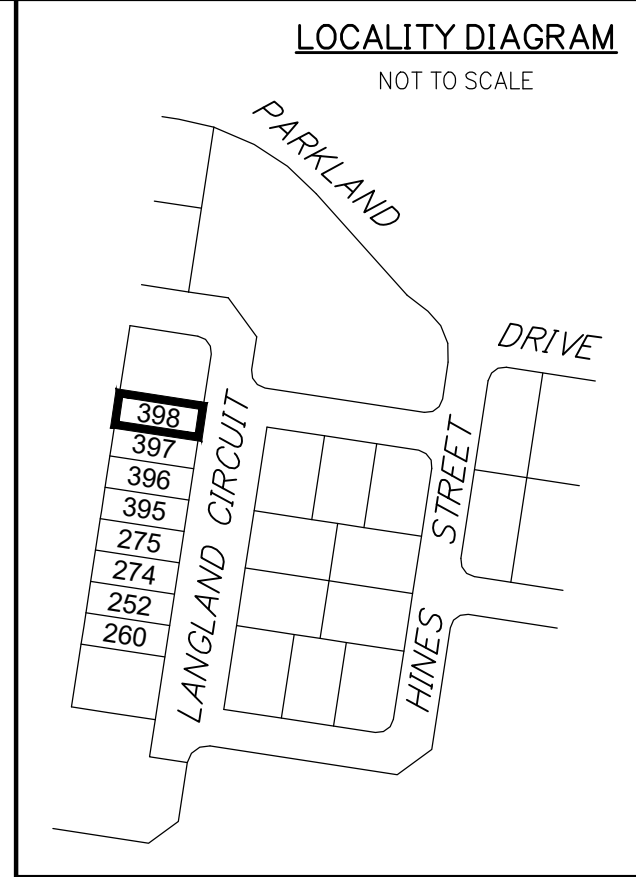
Project: WATERLEA STAGE 3B	Client: WATERLEA NOMINEES CO PTY LTD
--------------------------------------	------------------------------------------------



LANDPARTNERS built environment consultants	Western Corridor Office Level 6, Springfield Tower 145 Sinnathamby Boulevard Springfield Central QLD 4300 PO Box 4647 Springfield QLD 4300 t (07) 3470 8100 f (07) 3470 8101 e info@landpartners.com.au www.landpartners.com.au
------------------------------------------------------	------------------------------------------------------------------------------------------------------------------------------------------------------------------------------------------------------------------------------------------------------------

DRAWN	AW	DATUM	AHD D
DATE	31/07/2019	LEVEL ORIGIN	PSM133152 RL 37.876
CHECKED	PJB	COMPUTER FILE	WC007157-03B-56-1
DATE	31/07/2019	SCALE (@ A3)	1:250
APPROVED	PJB	PLAN NUMBER	WC007157-03B-63-1
DATE	31/07/2019		





DISCLOSURE PLAN FOR PROPOSED LOT 398

This Disclosure Plan was prepared in accordance with the Land Sales Act 1984 to enable the sale of proposed lots. This plan should not be used for design purposes as the details shown on this plan may vary from final site conditions. Waterlea Nominees Co Pty Ltd recommends using As Constructed information for design purposes.

As-Constructed details shown hereon were supplied by LandPartners on 17th January 2019.

As-Constructed surface contours based on AHD-D datum at an interval on 0.25m, shown as: 63.25

Where applicable, Easements are shown as:

Where applicable filled areas are shown as:

Where applicable cut areas are shown as: + + +

Maximum Fill Depth: 1.98m

Fill Compaction Rate: 95% Standard Dry Density, carried out in accordance with Australian Standard AS 3798 – 2007 and Ipswich City Council Planning Scheme Policy 3 – General Works, Part 4 – Earthworks.

Project: WATERLEA STAGE 3B	Client: WATERLEA NOMINEES CO PTY LTD
------------------------------------------	--------------------------------------------------------



LANDPARTNERS
built environment consultants

Western Corridor Office
Level 6, Springfield Tower
145 Sinnathamby Boulevard
Springfield Central QLD 4300
PO Box 4647
Springfield QLD 4300

t (07) 3470 8100
f (07) 3470 8101
e info@landpartners.com.au
w www.landpartners.com.au

DRAWN	AW	DATUM	AHD D
DATE	31/07/2019	LEVEL ORIGIN	PSM133152 RL 37.876
CHECKED	PJB	COMPUTER FILE	WC007157-03B-56-1
DATE	31/07/2019	SCALE (@ A3)	1:250
APPROVED	PJB	PLAN NUMBER	WC007157-03B-64-1
DATE	31/07/2019		

